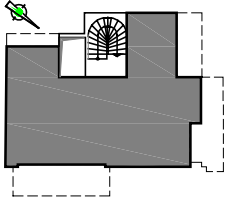


THIRD FLOOR Residence C



Total area of condo : 92.23 m2
Living: 34.3 m2
Kitchen: 11.3 m2
Bedroom A: 15.31 m2
Bedroom B: 13.36 m2
Balconies: 19.4 m2



SPECIFICATIONS / MATERIALS

Bearing structure

Concrete: Reinforced concrete class C20/25 with class S500s rebars.

Walls

Internal: Single brick wall
External: Twin brick wall

Plasterwork and painting

Indoors: Three coats plastering followed by painting with plastic colour
Three coats plastering followed by painting with acrylic colour

Outdoors:

Floors

Bsemenet: Concrete industrial floor
Pilotis: Non slip ceramic tiles
Common indoors areas
1st-4th floor condos: "Serres" marble
5th-6th floor penthouse & all condo bedrooms : Ceramic tiles
Balconies: Wooden floor (European oak)
Baths/WC: Non slip ceramic tiles
Wall covers Ceramic tiles

Kitchens: Ceramic tiles btw base and wall cabinets
Baths/WC: Ceramic tiles up to level 2.20m

Frames - Doors

Doors & Windows: Aluminium frames (Alumil class 9200) painted w electrostatic paint and aluminium shutters electrically operated

Building Entry Door: Hard steel frame security door with wooden panels
Condo Entry Door: Hard steel frame security door with wooden panels
Internal doors: Lamintae faced doors
Storage room doors: Steel doors

Woodwork

Cupboards: Bakelite cupboards

Kitchen cabinets: Bakelite cabinets

Bathroom fixtures

Bathtub: Ideal Standard acrylic bathtub

WC: Ideal Standard Oceane series

Heating

Central Heating: Single pipe heating system with gas, autonomous for each residence

Hot water: Boiler 100lt operated w electricity, gas or solar

Radiators: Panel type radiators

Electrical installation

Specifications: Greek regulations for indoors electrical installations

Video door phone: High end video door system that allows unlocking of the building door

Alarm system: Infrastructure and cables for the installation of a burglar alarm system

TV sockets: In each bedroom and each living room

Satellite TV sockets: In each living room

General

Lift: Hydraulic elevator (8 person capacity)

Parking area: One parking place for each residence

Storage: One storage room at the basement for each residence